



CHERRY HILL FIRE DEPARTMENT

CAMDEN COUNTY, NEW JERSEY

Effective
3/1/2025 to
12/31/2025

RESIDENTIAL RESALE REQUIREMENTS FOR ONE & TWO FAMILY DWELLINGS

CSACMAPFEC 5:70-2.3 (a)

Requests must be submitted using the online form located at www.chnj.gov/fire, 3 to 4 weeks prior to the settlement date. Email questions to sdi@chfd.org or call **856-429-7441**.

Inspection Fee/Payment

Payment is due at the time of the inspection – credit card, check or money order payable to CHFD - NO cash.

Requests received eight (8) calendar days or more prior to the settlement date:	\$100.00
Requests received seven (7) calendar days prior to the settlement date:	\$115.00
Requests received three (3) calendar days or less prior to the settlement date:	\$162.00
Re-inspection Fee:	\$35.00

Sellers age 62 & over may deduct \$30.00 from the initial inspection fee - **PROOF OF AGE REQUIRED**

Certificates are valid for 90 days

Inspection Checklist

HOUSE NUMBERS

- ☐ Numbers are numerical characters, contrasting color from the house, at least 4" high, permanently affixed to the house & visible from the street. *Light post or mailbox numbers are NOT acceptable.*

SMOKE ALARMS – **UL APPROVED**

- ☐ **10-year battery sealed** smoke alarm located on **every level** of dwelling (5:70-4.19) or *hardwired as required
- ☐ Basement level **10-year battery sealed** alarm is located at bottom of stairwell, at ceiling level (not between joists)
- ☐ Bedroom hallway **10-year battery sealed** alarms **MUST** be within 10 feet of **ALL** bedroom doors
- ☐ Smoke alarm **10-year battery sealed** located in **every** bedroom on ceiling
- ☐ *Electric smoke alarms (hardwired) **CANNOT** be replaced with battery operated alarms
- ☐ Smoke alarms are less than 10 years old and are operational

Any house equipped with a low voltage fire alarm system (installed by an alarm company) must have that system tested and approved by an alarm contractor prior to the CHFD inspection date. A copy of the alarm certification provided by the alarm contractor must be presented to the CHFD inspector at the time of the inspection.

**Electric smoke alarms, required to be installed by the building code, cannot be replaced with battery operated smoke alarms (NJAC 5:70 Section 104.1)*

Do **NOT** install smoke alarms in kitchens, bathrooms, near forced air ducts or furnaces, in the "dead air" space where the ceiling meets the wall, close to ceiling fans, in crawl spaces, or attics.

CARBON MONOXIDE ALARMS – **UL APPROVED**

- ☐ Located in the hallway, within 10 feet of **ALL** bedrooms
- ☐ Installed as per the manufacturer's instructions
- ☐ Carbon monoxide alarm(s) are less than 10 years old and are operational

Do **NOT** place alarms in electrical outlets that can be turned off by a switch or that are located against floor molding. Plug-in, battery powered, and hardwired CO alarms are acceptable.

SECONDARY POWER SOURCE IDENTIFICATION LABEL

If the home has a secondary power source there is a new requirement to have a permanent label by the main electrical panel AND electrical meter. Secondary power sources may include: solar panels, a backup power generator, battery storage systems, or any other supplemental source of electrical energy to the primary power supply.

The label must be marked with wording similar to: **"Caution: Multiple Sources of Power"**

This label may **NOT** be hand written. A label compliant with ANSI Z535.4 will meet the requirements.

Diagrams

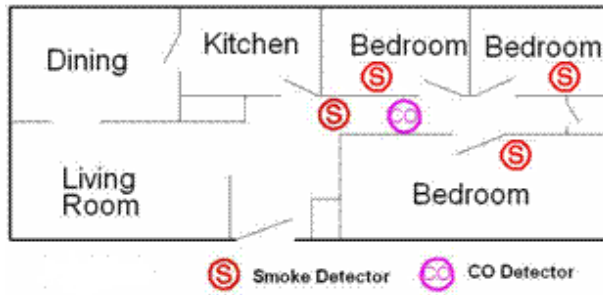


Figure 1

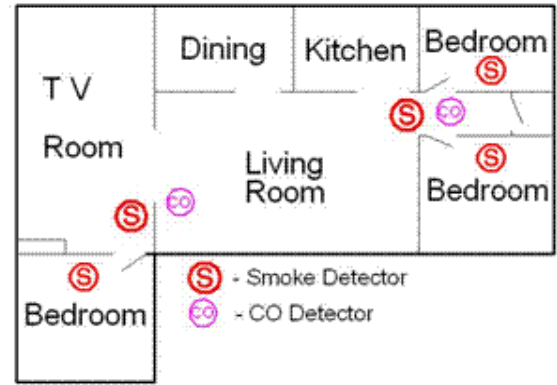


Figure 2

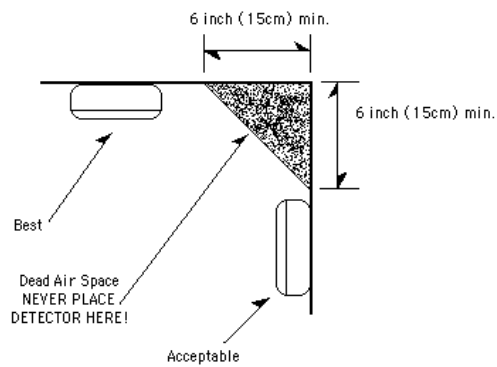


Figure 3

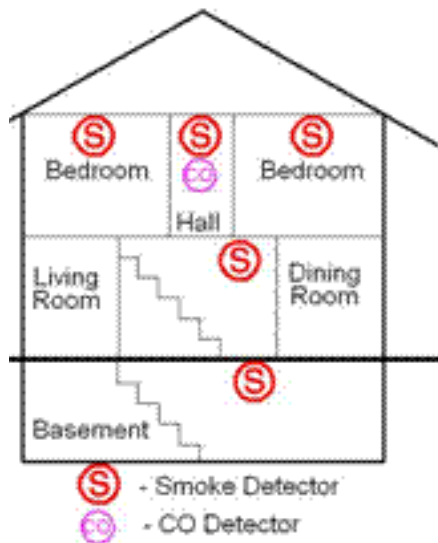


Figure 4

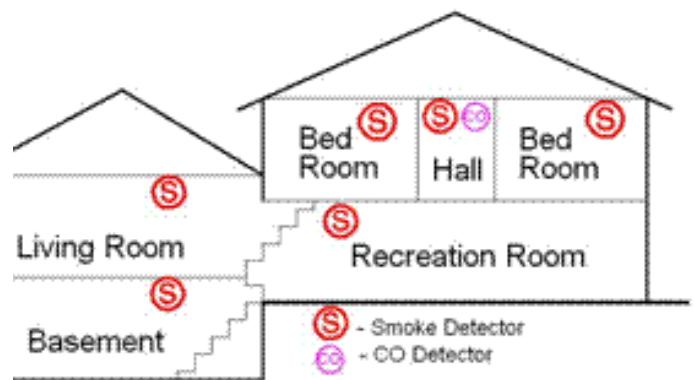


Figure 5